

Printer Utility Installation Guide

Version 1.0

Brief Description

This guide covers the installation of “**PrinterUtility**” and its related components.

Overview

This guide covers the installation of “**PrinterUtility**” and its related components on devices with Windows Mobile operation system. Software represent drivers package for mobile printers.

System Requirements

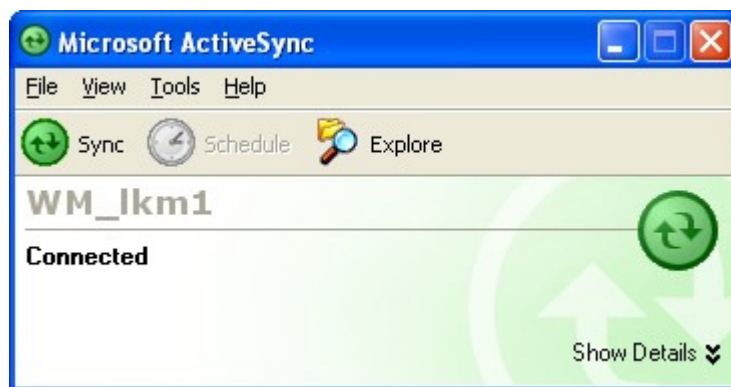
- **Supported operating systems:** Windows CE.NET 4.20 and above, Windows Mobile 2003 and above, Windows Mobile 2003 SmartPhone Edition and above.
- **To install application via PC:** Microsoft ActiveSync version suitable with your PDA device.

Instructions

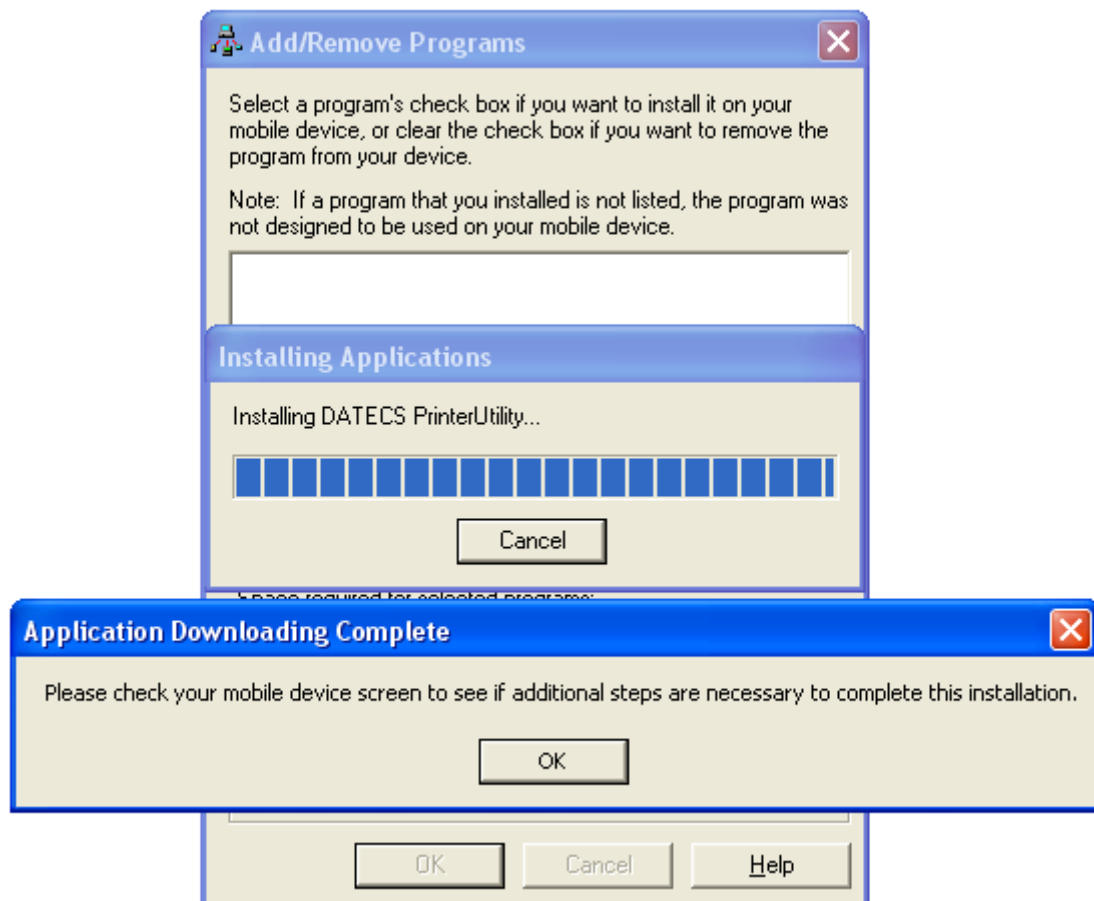
Step1: It is always a good idea to do “**Soft Reset**” on PDA device before installing application. Usually this can be done with PDA stylus or clamp put into hole where device “**Reset**” button exists. For more information about that please refer to your PDA device user guide.

Step2: If you don't want to use Microsoft ActiveSync then you must find out some way to copy “**CAB**” file in PDA device and double click on it using File Explorer. If device is with Windows Mobile 2003 this “**CAB**” file shell be self remove after successfully installation.

Step3: To install application via Microsoft ActiveSync first ensure that device is properly connected to PC.

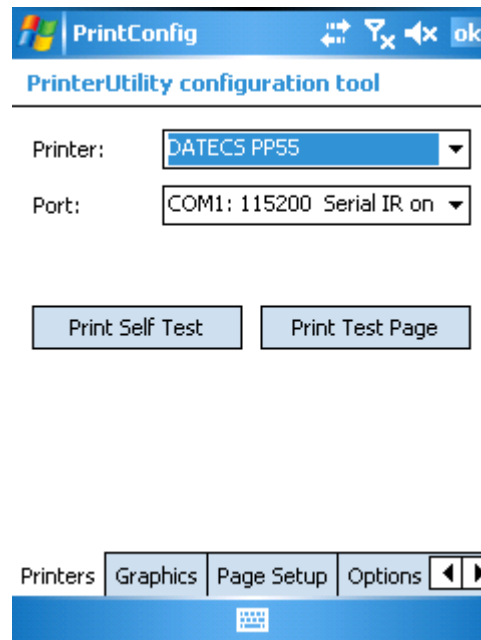


Then run “**setup.exe**” which shell force Microsoft ActiveSync to deploy and install application. After finish with deployment you shell see notification message on PC screen.



Please check your mobile device screen for any messages and answer them. They can varies depends on device model and operating system. If you not sure press “**Yes**” to all of them.

Step4: After successful install, in “**Start->Programs**” you find application “**PrintConfig**”. That is configuration tool of printer drivers. You can select default printer and communication port. Also you can check connection with printer while printing diagnostic information or test page.



Configuration screen description:

➤ Printers Tab

Printer: Specify printer model. Currently selected printer is set as default.

Port: Specify communication port. In most cases yours connection between PDA is made via USB cable or Bluetooth.

If you use USB cable you must be warned that most devices with Windows Mobile 5.0 and above are set to use “**RNDIS**” USB function driver. Printers like PP55 does not support it so you must switch to “**Serial On USB**”. You can do this with additional application called “**USB**” that you can find in “**Start->Programs**”. Port that you need to select in that case is depends of device model and can be “**COM8: USB Cable**” or “**COM6: Serial On USB**”.

With Bluetooth connection you have two options depends of device model. If yours device is with Microsoft Bluetooth stack you can select “**BTH:**” port and then enter a valid Bluetooth address in field “**Bth Address**”. In other case via device Bluetooth Manager you can map virtual com port for outgoing connection with printer and then select that port. For more information how to do that please refer to device documentation.

Bth Address (optional): This field appears only if you select “**BTH:**” port and must contains a valid Bluetooth address.

Print Self Test: Print diagnostic information.

Print Test Page: Print simple graphics image.

➤ Graphics Tab

Dithering: Specify when to apply error diffusion over images printed via graphics DC.

Brightness: Specify brightness of images printed via graphics DC.

Contrast: Specify contrast of images printed via graphics DC.

Intensity: Specify intensity of images printed via graphics DC.

➤ Page Setup Tab

Increase Page Height: This settings must be changed in very rarely case on devices with Windows CE.NET4.20. It is related with printing HTML documents from Internet Explorer and increase virtual page height by multiply of selected value.

Print whole graphics page: Specify when to print the whole graphics page or stops after last black pixel printed.

Paper feed after print: Specify how many to feed paper after finish to print document.

Print logo: Specify when to print logo.

➤ Options Tab

Use printer in mode: Specify when to works with printer via protocol mode or not.

Use driver in kernel mode: Specify when to use drivers via Windows API. Although the drivers works a little faster it is not recommended to use it.

Show progress: Show progress cursor while printing.

Log Level: That is debug purpose settings only.

➤ **About**

Contains drivers information

Using

This driver package is develop with purpose to help developers with using printers. It not provides any additional application for printer or using any other printer functionality. We provide SDK's for most valuable development environments, samples, and free application called “**DatecsPrint**” which demonstrates a large set of functionality. For more information about how to develop with “**PrinterUtility**” please refer to development package and its related componets on:

<ftp://ftp.datecs.bg/pub/WINCE/PrinterUtility/>

For more information about our commercial products related with that drivers package please contact with our sells department.

Remarks

For general inquiries, bug reports and comments please send email to:
pocketpc@datecs.bg